

HAMMERSMITH LOCALS



ASKEW ROAD | BRACKENBURY | BROOK GREEN | RAVENSCOURT PARK

SPRING 2020

KEEP IT LOCAL!

Welcome to the Spring issue of Hammersmith Locals. As usual, we are showcasing a wide array of businesses, some with excellent seasonal offers.

The Green Room at W6 Garden Centre is dedicated solely to houseplants and their accessories – and now's the perfect time to visit. Readers can claim a 15% discount (over £10) on any purchase at The Green Room if they mention our feature on pages 4/5. We are also delighted to be featuring two long-established Brackbury Village businesses – Tool Chest and Stenton Family Butchers. Both Ian and Neil McCarroll and John Stenton have been serving the community for many years – and long may they continue to do so!

If you would like to be included in our Summer issue, do get in touch.

Neil

Neil McKelvie, Editor

CONTACT US

Editorial and Advertising:

07956 391739

connect@keepthingslocal.com

Disclaimer: inclusion of information in this magazine does not imply information, products or services are endorsed, verified, or factual.

Publisher: Keep Things Local Ltd.

All Content © 2020 Copyright Protected.

All Rights Reserved.



OZMAS DECORATING



Georgie Knight and her expert painting and decorating team deliver superb results on interior and exterior jobs of every size and scope.

30 Elthorne Park Road, W7 2JA | 07772 636 000
info@ozmas.co.uk | www.ozmas.co.uk

To feature email: connect@keepthingslocal.com



A DATE FOR YOUR DIARY

Everyone is welcome to come along to the always popular Grove Neighbourhood Centre (GNC) Spring Fete, which will be held on Saturday 4 April between 1-3pm (Admission: Adults £2, Seniors £1 and Children free).

On the day there will be the usual fantastic stalls and fun activities for the whole family: jewellery, clothing, shoes and accessories, a clairvoyant, tombola, gifts, delicious home-baked cakes, hot food, books, plants, bric-a-brac, children's games and, of course, the special Spring Raffle with fabulous prizes. Just remember to pop into the Centre before the fete to buy your raffle tickets (they will also be available on the day): a strip of five tickets costs only £1, so it's well worth having a go!

The GNC team would be delighted to receive donations of any unwanted new gifts, bric a brac, bottles of wine and spirits and clothes that are still in good condition. Please drop off any items at the Centre by 18 March so that everything can be processed in good time.

Grove Neighbourhood Centre

7 Bradmore Park Road, W6 ODT
020 8741 3321

gnc@groveneighbours.org.uk

www.groveneighbours.org.uk

GNC
Charity
Sponsor



Neil and Ian

Tool Chest

68 Iffley Road,
W6 0PF

020 8748 7912

ian@toolchesthire.co.uk

www.toolchesthire.co.uk



Ed and Michal



GET FIT AND GO GREEN

Terra Hale offers environmentally-conscious workouts and a new spin on spin classes

Michal Homola, the mastermind behind Terra Hale, London's first eco-friendly gym, is a man who walks the talk. 'I believe that we must pay the same attention to safeguarding the planet as we do to being mentally and physically fit.

'That's the philosophy of Terra Hale (Strong Earth). It's why we use state-of-the-art Eco-Pwr bikes in our spin studio to convert human peddle power into electricity for the National Grid. The gym itself is made from recycled and sustainably-sourced materials, we have a plastic-free policy and every time a client signs up for a new training package we plant a tree – they receive a certificate with the precise GPS location.'

Michal was raised in Czechoslovakia's mountains, an experience that shaped his affinity with the natural world. Having been a semi-pro snowboarder, he settled in London in 2004 and became a personal trainer. He founded his first studio in Notting Hill and opened Terra Hale in a railway arch at Shepherd's Bush market two years ago.

'Our focus is on bespoke personal training, group fitness sessions and body transformation, all through high quality work-outs that help people to get fit, gain muscle, boost endurance and strength and become flexible,' says Michal. 'We specialise in pay-as-you-go small group classes – the number is capped at

8-10 to ensure individual attention – including High Intensity circuits, TRX body weight conditioning and calorie-burning exercise based on rowing methods. In addition, we offer wellness and mindfulness sessions, such as yoga and meditation, nutritional coaching and sports injury management.'

Boxing is a key element of the Terra Hale programme. 'It's Boxercise, but with boxing technique,' explains Head Coach Ed Chattey. 'You don't need previous experience and it's excellent for core fitness. I also like to introduce technical aspects of light sparring and shadow boxing so that members can learn a new skill set.'

Terra Hale is a gym with a difference. If you care about our world, it's the perfect place to do some good while you work at feeling good.



Terra Hale

Railway Arch 182
Shepherd's Bush Market,
W12 8DF / 020 3719 4534
michal@terrahale.com
www.terrahale.com



Paul Holt



EXPLORING W6'S HOUSEPLANT JUNGLE...

*Paul Holt has created an exciting indoor oasis called
The Green Room at the W6 Garden Centre in Ravenscourt Park*

In January 2019, Paul Holt, the Creative Director of W6 (and N1) Garden Centre, was killing time before meeting Louise Alhadeff, the Manager, at the Ravenscourt Park site.

'I was looking at the old railway arch right next to the W6 Café and wondering what we could do with it,' he recalls. 'We had tried selling furniture, and that hadn't worked; Leo, the Café Manager, had looked at using it, and that hadn't worked either.

'Then I noticed a single cheese plant abandoned in the back corner. It had been there all winter with no heating and virtually no light, and yet was still alive. I thought, if it can survive, why don't we take out the doors, re-model the interior and convert the whole arch into a space in which to

display and sell high quality houseplants. Fortunately, Louise agreed with me!

A year on from that flash of inspiration, the original brick railway arch has been impeccably restored and The Green Room – as it was christened – is flourishing with a floor-to-ceiling indoor jungle of houseplants and stylish pots, containers and accessories. It has proved hugely popular with the Garden Centre's customers. 'Having plants around simply lifts the spirits,' smiles Paul. 'They are so important in an urban setting; even if you only have a balcony, they provide a fundamental connection with nature.'

Having studied Horticulture and worked as a Nursery Manager, Paul was introduced to Beryl Henderson, who had recently opened the

N1 Garden Centre, through a fortuitous mutual acquaintance. 'Beryl needed a temporary Garden Centre Manager and, by pure chance, I'd moved to London with no job.' That was 20 years ago and today, as the business's Creative Director, Paul travels throughout Europe, sourcing plants and accessories.

'Of late, there has been such a surge of interest in houseplants,' he says. 'They offer so much: whether tall, small, trailing, climbing or hanging, they make perfect natural decoration for any home or office. We sell a wide cross-section – from the well-known to the more exotic – to suit every lifestyle. For example, if you travel for work, you don't want a houseplant that demands constant attention; also, since we opened The Green Room at W6, we've found that Insta collectors – they tend to be the younger generation – love our more unusual specimens.'

The friendly Garden Centre team are always on-hand to give expert advice on caring for the houseplants and Paul ensures that the range of accessories is constantly refreshed. 'I always try to reflect current colour trends and because so many people pop into the W6 Café regularly, I need to keep it interesting.'

And finally, which houseplant would Paul recommend? 'It's so hard to choose, but I love *Jatropha Podagrica*, commonly called The Gout Plant. It's a succulent with a swollen stem, hence the name, small rhubarb-like leaves and neon orange and yellow flowers that come out as a stalk. It's a real curiosity and a fantastic talking point – I've had one since I was 16 years-old!'

SPECIAL OFFER FOR READERS:
W6 Garden Centre is offering a 15% discount on all The Green Room plants and products when you mention this article (over £10). A fantastic range of outdoor plants is also ready for Spring planting (a local delivery and ordering service is available).

W6 Garden Centre and Café

17 Ravenscourt Avenue, W6 0SL

020 8563 7112

info@w6gc.co.uk

www.w6gardencentre.co.uk

@w6gardencentre @w6gardencentre_cafe





Stefan Duda



BUSINESS CLASS

First-class facilities and support systems and no logistical headaches... Hana at 245 Hammersmith is the perfect flexible office solution

‘Our clients know that they are able to focus solely on their own business,’ explains Stefan Duda, Hana’s General Manager. ‘We provide a work environment tailored to their needs and a dedicated concierge service to take care of all the admin – technical support, furniture, cleaning, security and maintenance – that swallows up time.’

Hana will be opening its third London premises in April at the 245 Hammersmith building. ‘We have the first and second floors,’ adds Stefan, ‘Our philosophy is to create the best space in which to be productive and, when necessary, to relax. All the offices are configurable – anything is possible, we can remove walls if necessary – and fitted out to premium

standard; for example, we have active noise cancellation systems, ultra-fast connectivity, acoustically sealed rooms and ergonomic Herman Miller Sit-Stand desks and chairs.’

The Hana approach is based on three core elements: Team, Meet and Share. ‘With Team a client has a 24/7 branded office,’ explains Stefan. ‘That can be a Suite accommodating 12-150 employees – it comes with a dedicated meeting room and focus room – or a smaller Studio for up to 12 people.

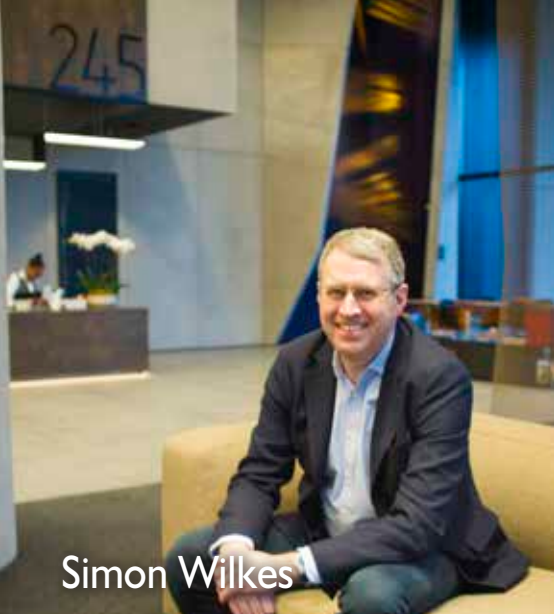
‘Meet is ideal for businesses that need to arrange a meeting or presentation: we have nine meeting rooms (for 4-14 people) which can be pre-booked by the day, hour or week. All have the

latest technology, such as screen sharing and video conferencing, and fresh food and drink is available. Finally, Share is our co-working option with desks, tables, chairs, lounge, one-person focus rooms and complimentary refreshments.

‘Whatever space you reserve, Hana’s concierge team is on-hand to smooth the working day, whether that’s booking a taxi, printing documents, mail handling or finding a restaurant. And, of course, our clients can take part in the 245 networking and wellbeing events and use the excellent facilities, such as the café and Urban Park.

‘If you are interested in learning about how we can help your business grow, we’d be delighted to show you around and explain more about our flexible membership options.’

Hana
245 Hammersmith Road,
W6 8PW
stefan.duda@yourhana.com
www.yourhana.com



Simon Wilkes

WHERE BUSINESS MEETS THE COMMUNITY

245 Hammersmith Road delivers an inspiring environment with first-class facilities that can be enjoyed by both employees and local people

If you live in Hammersmith, the new 245 development is hard to miss. It has 11 storeys, 242,000 sq ft of flexible workspace, a piazza and an Urban Park that can accommodate two football pitches. Oh, and it's red!

Dubbed The Big Red Workplace courtesy of its façade – the colour comes from the red angled window surrounds – it is officially called 245 Hammersmith. 'We acquired the site in 2014,' recalls Simon Wilkes, Legal & General's Head of Business Space Development. 'It was unusual in that it had so much outdoor land; that gave us the opportunity to design a sustainable building in which businesses can thrive but which also has accessible areas, like the Park, that can be used by the community.'

'Today, companies require locations that motivate their staff and which foster employee welfare. Our aim at 245 was to create an architecturally exciting space that allows people to work, relax, socialise and network in many different ways. Added to that, we provide state-of-the-art systems and technology, a dedicated concierge service, a programme of

health and wellness classes and superb facilities, ranging from landscaped roof terraces and an in-house café to secure cycle spaces and showers and changing rooms.'

Carley Bright is 245's General Manager and she and her team are responsible for running the building on a day-to-day basis and arranging an events calendar. 'A key part of Carley's brief is to engage with people in the area,' explains Simon. 'So, everything that happens here, whether it is a pop-up market, open-air film screening or acoustic gig, is open to both our occupiers and our neighbours.'

'We believe 245 will deliver new employment opportunities and £28 million of social value to Hammersmith. I hope residents will use our meeting rooms, pop into the coffee shop and visit the park. We don't want the building to be solely for those who work here: we intend to play an active role in local life.'

245 Hammersmith

245 Hammersmith Road, W6 8PW
020 3640 2691 / Reception@my245.co.uk
www.245hammersmithroad.com



Christopher Barrow

PEACE OF MIND

Metropolitan Safe Deposits ensures your most valuable possessions are safe and secure

‘We know who, what, when and where at all times,’ smiles Christopher Barrow, Chief Executive of Metropolitan Safe Deposits. ‘Those are the key questions in our business. From multi-layered alarm and surveillance systems to proven physical security, we offer clients an affordable, convenient world-class facility.’

Metropolitan Safe Deposits opened its West London premises on Chiswick High Road last July following a 10-month build that required 225 tons of reinforced concrete to create space for two basement vaults made by the industry’s leading manufacturer, Robur Safe. At full capacity, the Swedish company will also supply 8000 safe deposit boxes in 12 different sizes: the smallest, which is perfect

for storing keepsakes, rings or watches, costs £95 p.a (including £10,000 insurance).

The sophisticated security network begins with 24/7 CCTV of the perimeter and interior, with the exception of the private viewing cubicles in the vaults. ‘The CCTV is also monitored by our Knightsbridge and St John’s Wood offices,’ explains Christopher. ‘The building itself is equipped with seismic and stress detectors and the “secure area” beyond reception is protected by bullet-resistant airlock doors with magnetic and electronic locks.

‘Client access is controlled by computer-verified ID and biometric fingerprint procedures and each safe deposit box (up to three people are registered to each) is opened with two unique keys – no other keys exist for that lock. If a box is re-locked, the ID process must be repeated, so ensuring a proper audit trail. Furthermore, we have our own unique security features: every box is individually alarmed and we are alerted if more than a given number are open at one time.’

Metropolitan Safe Deposits’s insurers recently commissioned a review of security and staff training, making no recommendations for improvement. ‘To the best of our knowledge, this type of vault has never been breached,’ says Christopher. ‘If a system fails, a back-up is always in place. At a time when banks are exiting the safe custody market, it is vital that independent vaults can provide a secure, high quality service.’



Metropolitan Safe Deposits

329 Chiswick High Road, W4 4HS

020 3928 2828

chiswick@metrosafe.co.uk

www.metrosafe.co.uk



15% OFF*

**BRAND NEW SAFE
DEPOSIT VAULT
IN CHISWICK**

***INTRODUCTORY OFFER FOR 12 MONTH RENTALS
ON ALL NEW BOXES OPENED BEFORE 31/12/20**

**PRICES START AT £95 A YEAR
12 DIFFERENT SIZES OF BOX**

**CALL 020 3928 2828 TO MAKE AN APPOINTMENT
329 CHISWICK HIGH ROAD, LONDON W4 4HS**

www.metroSAFE.co.uk

CHISWICK KNIGHTSBRIDGE ST JOHN'S WOOD



METROPOLITAN
SAFE DEPOSITS



Vishal, Tanvi, Natacha and Dylon

HEALTHCARE AT YOUR DOORSTEP

By combining an online pharmacy and healthy living shop, Vishal and Tanvi Patel and their team have created a valuable community resource

Almost three years since they opened on Goldhawk Road, and having survived a burst water main which completely flooded the premises and destroyed their stock, Vishal and Tanvi Patel have built a successful business.

In fact, the charming couple, who are both experienced pharmacists, have built two businesses in one: an online pharmacy (Pharmacy on Wheels) and a health and fitness outlet (Fitness Fuel).

'You could say that we are the perfect fusion of Boots and Holland & Barrett,' smiles Tanvi.

'While the concept of an online pharmacy is still relatively new, we dispense under exactly the same NHS regulations as a traditional chemist – and we have the huge advantage of convenience. Patients registered with us have their prescriptions sent electronically from their GP

and we make them up and deliver to the door (home or work). If it is within three miles and the stock is available, it's a same-day service. Also, if a patient has a repeat prescription, we take care of the re-ordering, so there's never any worry about running out.'

Having supplied drug trays (dosset boxes) to care home residents for some time, Tanvi and Vishal are now providing them to their other patients. 'We have 28-day trays and they are perfect for everyone – the elderly, the forgetful and the just busy – and particularly those taking multiple tablets daily,' explains Vishal. 'Even better, the individual pods pop out, so if you're away for a few days, you just take the ones you need, not the whole tray.'

The Fitness Fuel side of the business caters for everyone from fitness enthusiasts to mothers and babies. 'Our focus is on stocking high quality, specialist products,' says Tanvi. 'For example, we have the natural skincare brand MooGoo, minerals, multi-vitamins and sports nutrition supplements, and an excellent range of fitness aids.'

With an on-site consultation room in which the couple run a licensed travel clinic, Tanvi and Vishal are a one-stop medical and healthy lifestyle hub. And, if you need assistance, they are always happy to advise.

Pharmacy on Wheels/ Fitness Fuel

86 Goldhawk Road, W12 8HD
020 8740 5555
info@pharmacyonwheels.co.uk
www.pharmacyonwheels.co.uk



chelsea

fine arts

Art studio,
creative
space and
gallery

CHELSEA FINE ARTS

ART CLASSES FOR YOUNG PEOPLE AGED 8 TO 18

EASTER HOLIDAYS ART CLASSES 2020

WEEK 1

Monday 30th March - Friday 3rd April

WEEK 2

Monday 6th April - Thursday 9th April

WEEK 3

Tuesday 14th April - Friday 17th April

Morning Sessions

10:30 am – 1 pm

or

Afternoon Sessions

2:30 pm – 5 pm

(Minimum 3-5 sessions advised)



BOOK ONLINE

WWW.CHELSEAFINEARTS.CO.UK

CHELSEA STUDIO

10 Chelsea Wharf, 15 Lots Road
London SW10 0QJ

RAVENS COURT PARK STUDIO

275 King Street,
London W6 9QF

Tel: 07899 908 917 / 07841 630 948

info@chelseafinearts.co.uk

www.chelseafinearts.co.uk





John Horton (right)

NEW YEAR. NEW OFFICES. NEW OPPORTUNITIES

Horton and Garton has moved into the same corner office in Hammersmith where, 20 years ago, company founder John Horton launched his career. Stop by and say hello...

'I'm back! In one of life's funny twists, I've returned to the very same premises in which I started my property career: 172 King Street, W6. Our six-month refurbishment is complete, the purple ribbon has been cut and we are open for business.

'We hired only local tradesmen and contractors for the building works – I wanted to keep our business local – and, as the self-appointed Project Manager, I have now felt the pain of anyone who has renovated their home or office. How long the smell of new carpets and paint will last is anyone's guess, but it's fantastic to see our team settling in well.

'Walking down King Street today, you may think not much has changed in almost 25 years, but big major changes are afoot. When I was

cutting my teeth in the late 90s (the Britpop summer of '96), I was wearing a double-breasted pinstripe suit – I'd be given a fashion Yellow Card for wearing that today – my company Corsa was parked up in the classic old Frank Dale garage (<https://frankdale.com/about-us/172-a-tradition-of-excellence>) at 124 King Street (it is now the Holiday Express), I'd often eat lunch at 'Spud U Like' (today, a bustling sushi bar) and I knew exactly what was showing at the cinema.

'Thankfully, a few independent traders have stood the test of time, such as Bushwacker Wholefoods and Jin-da (formerly The Hammersmith Café). As a new Town Hall emerges, Kings Mall gets a long-overdue facelift and with IKEA on the way, it is surely onwards and upwards for Hammersmith.

Advertorial | Search: #keepthingslocal #HammersmithLocals



‘Last year, our Sales and Lettings teams achieved another record year. We significantly increased our market share, establishing Horton and Garton as true market leaders in Hammersmith, Shepherd's Bush and Chiswick. More specifically, our "purple patch" is the postcode W6 0; sitting south and west of Goldhawk Road, north of King Street and east of Hammersmith Broadway, this is the area in which we excel and in which we have the largest number of properties and clients.

‘We agreed 31 sales in this W6 0 area during 2019, which was almost 30% of the total completed transactions. In addition, our lettings team agreed 59 lets in the same area, representing more lettings than the second and third-placed agents combined! These figures confirm that we're the best choice in "our patch" of Brackenbury Village, Ravenscourt Park and Stamford Brook.

‘Our track record as the market-leading agent in this leafy part of Hammersmith is unrivalled and envied by our competitors. We are working with the very best properties and clients – and we're consistently achieving the best price and terms.

‘But don't just take my word for it – have a look at our reviews and read the client testimonials. If you are buying, selling or renting, please pop in and talk to us at our new office on the corner of King Street and Studland Street.’

– John Horton MNAEA MARLA, Director.



Horton and Garton

172 King Street, W6 0QU

020 8819 0510

office@hortonandgarton.co.uk

www.hortonandgarton.co.uk

Advertise with #hammersmithlocals connect@keepthingslocal.com | #hortonandgarton



Tani Paci



BUILT TO LAST

‘Tani’s team was professional, friendly and reliable. The attention to detail gave a “wow” factor.’ –

Erynn Kortekaas, a recent client

‘I’m hands-on – that’s how I like to operate. I make sure that I spend time at each site every day. That’s why I focus on working locally in Hammersmith, Chiswick and Shepherd’s Bush and never take on too many jobs at any one time. It’s so important to create a positive relationship with clients and be available as a point of contact.’

Tani Paci is explaining his business philosophy, and the passion is clear. Tani was born into the building trade – his grandfather and father were skilled carpenters – and he has many years experience both in his native Albania and the UK. Now happily settled with his family in Brackenbury Village, he founded Tani Building Solutions three years ago and, since then, he and his friendly team have become a familiar sight around the W6 area – they recently completed the re-build and refurbishment of the new Horton and Garton estate agency offices.

The company covers the spectrum of domestic and commercial projects, including major structural work and interior renovation, loft conversions, kitchen and side return extensions and conservatories. ‘Whether the project is large or small, we have the expertise to take it from drawing board design to completed build on time and on budget,’ explains Tani.

‘I’m used to liaising with architects, structural engineers and party wall surveyors and I’m happy to project manage. Most importantly, I cost each job with the help of a qualified quantity surveyor – that means that the budget is clear from the beginning. And if a surprise comes up – and I like to think I can anticipate most issues – I immediately make the client aware and suggest practical solutions.’

Tani uses his own tried and trusted professionals, including specialists in all the individual building trades. ‘We pay attention to detail and take pride in getting it right first time; that’s why so much of our business stems from word-of-mouth recommendation. My philosophy is to be the local builder that you can recommend to friends and neighbours.’

Tani Building Solutions

7 Brackenbury Gardens, W6 0BP
020 3931 8686 / 07481 896169
info@tanibuildingsolutions.co.uk
www.tanibuildingsolutions.co.uk



Ana Ortiz



THE SOUND OF MUSIC

Ana is patient, extremely talented and fun. A wonderful inspirational teacher.’ – Amrita Agrawal (Guitar)

In 2005 Ana Ortiz took a month off from her flourishing career as a singer-songwriter and music teacher in Buenos Aires to visit a cousin in London. ‘One night, we went for dinner at Ciro’s in Knightsbridge, I was persuaded to get up and play and, afterwards, offered regular gigs. I stayed another three months, life took over and I’m still here!’

The birth of her son prompted Ana to change focus. ‘I couldn’t travel to play concerts and record sessions, so I put an advert offering music classes in my local Post Office and at the library, received a few enquiries and everything has grown from there.’

Since then, Ana has personally recruited a group of talented music tutors who travel around

West London to visit students in their own homes to teach classes – Ana herself covers electric and classical guitar, piano, keyboards and voice. ‘If you want to play the balalaika, I’ll find someone to come and teach you,’ she smiles.

‘Most importantly, my colleagues share my energy and passion for unlocking talent: our philosophy is to give people the tools and confidence to find their own voice through music. We judge our success by their progress.’

Ana and her team teach every age and ability – no experience is needed – and all musical styles from classical and opera to rock and pop. ‘We make sure the lessons are exciting and fun and I like to record them – it’s so important to

listen back to the sound.

Of course, we also tailor our approach to help those taking auditions or grade exams in boards such as ABRSM, Trinity and Rockschool.’

Every year Ana gathers her students together to stage a concert at The Polish Centre in Hammersmith. ‘We are building a family of musicians and it’s lovely for them to play together. Music means the world to me and I want everyone to feel that same joy.’

Instruments include:

- * Piano & Keyboards
- * Guitar * Bass
- * Drums and Percussion
- * Ukelele * Recorder
- * Flute * Voice (Singing / Vocal Coaching)
- * Clarinet * Saxophone
- * Violin, Viola and Cello
- * Double Bass * Harp
- * Music Theory

Ana Ortiz Music

07856 103570

hello@anaortizmusic.com

www.anaortizmusic.com



Neil and Ian

THE RIGHT TOOLS FOR EVERY JOB

Whatever the DIY or building project, Tool Chest will supply the tools at the best hire rates

Are you contemplating some domestic DIY, but don't want to buy the specific, and possibly costly, tools required for the job? Whether it's a power drill, long ladder, sander, carpet cleaner, cement mixer or dehumidifier, Tool Chest in Brackenbury Village is a one-stop hire shop for every conceivable piece of equipment, not to mention excellent practical advice and recommendations.

The family-run operation was opened in September 1984 by Ian McCarroll. 'I was working as a building contractor when I was offered a partnership in a small tool hire company. When my partner unexpectedly left, I just decided to go for it –

I was already using our Iffley Road premises as an office. We designed the Tool Chest logo, put up a sign and a friend, Neil Marshall, helped me manage the business while I carried on in the building trade.'

Today, Ian works with his son Neil, who joined full-time five years ago. 'If we don't have a tool in stock we can source it – even a five-ton digger if necessary! – and we're happy to discuss the best options.

'Also, whether we are supplying builders or DIYers who simply need to hire a particular tool, we offer exactly the same highly competitive rate. We charge about half the price you would pay at a major chain – and we

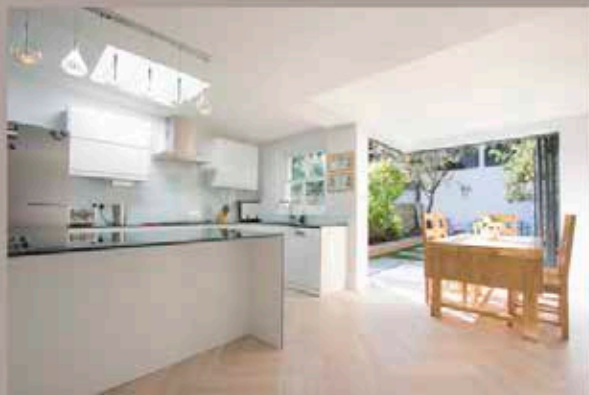
are also happy to deliver to the local area.'

Tool Chest is a Hammersmith business through and through. Ian lives off Askew Road and both his children – Neil and Louise – went to Brackenbury Primary School, as do his grandchildren. 'So many of our customers are locals. We get to know them and they appreciate our service – that's a really nice part of the job.'

Tools for hire include:
* Ladders * Breaking and Drilling * Cleaning and Floorcare * Concreting * Heating and Drying * Lifting and Handling * Painting and Decorating * Plumbing and Pumping * Sanding and Fixing * Cutting and Grinding * Welding and Power

Tool Chest Tool and Plant Hire
68 Iffley Road, W6 0PF
020 8748 7912
ian@toolchesthire.co.uk
www.toolchesthire.co.uk

Your local ARCHITECTS since 1992



We offer full or partial RIBA services to suit your project and budget including:

- Concept Design
- Interior Architecture
- Planning Applications & Advice
- Construction Drawings & Specifications
- Contract Administration & Site Inspections



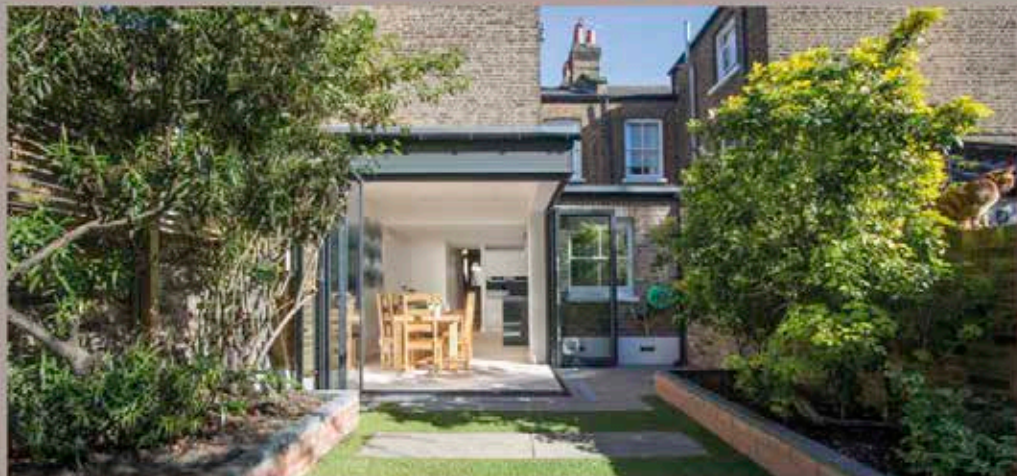
CONTACT US FOR A
FREE INITIAL CONSULTATION:

159 Askew Road
London
W12 9AU

T: 020 8743 9535
E: info@cparchitects.com
www.cparchitects.com



@ArchitectsW12



Chartered Practice Architects Ltd

CPA Ltd



Jack and John

SERVING THE COMMUNITY

John Stenton describes himself as ‘one of the last of a dying breed’ of local family butchers. Here he reflects on his professional life in Brackenbury Village...

‘Hammersmith is a nice place to work. I have customers from all walks of life and I enjoy having fun with them. The kids say hello on their way to school and I’ve got to know so many family generations – that’s lovely.

‘When people don’t recognise a cut of meat, I explain what it is and how to cook it and, on the next visit, we hear all about it. We get some wonderful compliments. One lady said: “Thanks

for making our Christmas magnificent.” That’s what gets me out of bed at 6am. There are no short cuts in this business!

‘We source the world’s finest meat. I keep tabs on where it comes from by visiting the farms – I know how the animals are reared. Now’s a good time to order Spring lamb for Easter. Many customers prefer a leg, but my favourite is shoulder double-wrapped in tinfoil

with rosemary and garlic. We also make and sell mini-lamb roasts – they are perfect for two people.

‘We’ve turned the clock back 50 years and now wrap meat in grease-proof paper to save on plastic. Customers come in with polyurethane re-sealable plastic bags and boxes; however, using them is like standing in a freezer with your coat on. The cold can’t get through to the meat and lower the temperature enough. We suggest glass pyrex containers to keep meat cold while you do your bit for the environment.

‘We take telephone orders – I always try to answer by the third ring – but I prefer to see customers face to face. We open at 8am on Saturdays, so that’s a good time to avoid queuing and you can pre-order on Friday and pick up on Saturday. Our French customers like meat cut differently and it can take time to prepare, so sometimes you may have to wait a little longer. However, queuing is a good way to meet neighbours!

‘Once, Lenny Henry came in and he said: “I thought you’d have two or three shops by now.” I said: “Len, like wives, on most occasions one at a time is more than enough to handle.

‘I have been serving the people of Hammersmith for 50 years and I’d like to say thank you for supporting me.’

**John Stenton
Family Butchers**

55 Aldensley Road, W6 0DH
020 8748 6121
www.johnstenton.com

- FREE ESTIMATING AND PLANNING
- FREE FITTING ON SELECTED CARPETS
- FAST FITTING SERVICE
- WALK IN SHOWROOM

**10% OFF
CARPETS
WHEN YOU
MENTION
THIS MAGAZINE**
Offer ends 31 May 2020



***‘Great service,
great carpet.’***

Joanne R. W6



020 8749 9340

156 Goldhawk Road,
Shepherd's Bush W12 8HJ
carpetstoresb@aol.com
www.thecarpetstore.info



Anna Kozowska

THE PERFECT FIT

How many times have you put on a favourite item of clothing and found that it doesn't fit as snugly as it once did? If that sounds familiar, you don't have to consign the piece to recycling or return it to the wardrobe.

Mike Moran, owner of the award-winning Top Hat dry cleaners, offers a professional alteration and repair service. 'I've invested in the latest sewing machines and hammers and Anna, our experienced in-shop tailor, has the expertise to deal with most issues. Whether it's taking up, taking in, letting out, re-lining, patching or stitching, she is happy to advise and will recommend the best options.'

Mike and his team follow the same approach with dry and wet cleaning. 'We combine our depth of knowledge with new technology to deliver the best finish; for example, we use a microscope linked to a phone or computer to check if a stain is deeply ingrained or on top of the fibres. And, when we're not sure about a material, we cut off a few fibres and burn them; we can tell what it is by the colour of the flame. Between us, we have 150 years' industry experience – and that pays dividends.'

Top Hat Hammersmith

289 King Street, W6 9NH / 020 8741 2581
info@tophathammersmith.co.uk
www.tophatchiswick.co.uk

Advertorial | #hammersmithlocals @tophatw4



Dave Halpin

DOES YOUR GAS BOILER NEED A CHECK-UP?

Gasworks London is extending its offer on free gas appliance checks to over-65s

It started last summer. Much to his surprise, Dave Halpin of Gasworks London found himself trending on Twitter. Following reports that the BBC was planning to charge over-75s for the TV licence, Dave tweeted that he would provide a complimentary gas appliance inspection to those in the same age group.

That offer proved so popular that Dave has now lowered the age range to anyone over 65, in particular those without the means to afford a check-up. 'The reaction last year was amazing – I even had re-tweets from Emilia Fox and Ben Fogle,' recalls Dave. 'What made it so worthwhile was that we discovered some potentially dangerous situations. The new offer is valid for any W (W1-W14) postcode and, though we won't be checking passports, it might help if you can

name two members of The Shadows!'

Dave and his experienced team are experts at repairing boilers of all makes and ages and installing new models. They provide a 24-hour service throughout West London, focusing in particular on the W6 area. 'We take pride in the way that we deal with our customers – I think that's why we have so many word-of-mouth recommendations.

'We deliver a high quality service and our pricing structure is transparent: we don't charge an upfront fee like many other companies and, if a job only takes five minutes to finish, we won't charge for the hour.' Intentionally, Gasworks is a small operation. 'I enjoy getting my hands dirty on repairs and installations,'

admits Dave. 'And I like to know what's going on with each client. That way I can ensure the work is done to the standard that I'd expect in my own home.

'The best thing about my job is the satisfaction I get when we crack a complex problem that has beaten other engineers. Sometimes, it's like solving a crime – like CSI Hammersmith!'

Services provided by Gasworks London include:

- * Boiler repair and installation
- * Boiler servicing
- * Landlord gas safety checks
- * Central heating
- * Boiler exchange
- * Power Flushing
- * Unvented Megafllo Cylinders

Gasworks London

07809 712 904

dave@gasworkslondon.co.uk

www.gasworkslondon.co.uk



Marble Nouveau (glazed porcelain) by Roca

1.2 x 1.2 and 2.4 x 1.2 metre sizes and they have been flying out of the door.'

Last year Peter agreed to represent Roca, the prestigious Barcelona-based manufacturer. 'They approached us, which was very flattering. We supply the collection in exquisite colours and all sizes. Also, our customers are always welcome to visit Roca's Chelsea gallery, which was designed by Dame Zaha Hadid, to view the tiles in a display environment.'

Whatever the nature and scope of the tiling project – whether it is interior or exterior, decorative or practical – Peter and his Showroom Manager, Manuela Profetto, will advise on products and costs and provide a friendly, informed service that helps customers come to the best decision.

INSPIRATIONAL TILE SOLUTIONS

With ranges from the world's leading manufacturers and it's own Hugo Ceramics brand, Intceram delivers the ultimate tile style

Since opening a dedicated showroom on Chiswick High Road in 2017, Intceram has built an excellent local reputation for its eclectic, high quality product range.

Co-owner Peter Hughes has forged close links with factories worldwide to ensure the company offers stylish tiles in effects, sizes and materials (polished, stone, cement, concrete, marble, wood, porcelain) to suit all tastes.

Should there be a gap in the portfolio, Peter has an extra string to his bow in the shape of Intceram's own popular Hugo Ceramics brand. 'We design the tiles ourselves – it's a really enjoyable process – using our detailed knowledge of the market,' he explains.

'Fashions come and go but, looking ahead, I think the current demand for large-format porcelain floor tiles will continue to grow. We have



Manuela Profetto

Intceram

76/78 Chiswick High Road,
W4 1SY
020 8747 3585
hugo@intceram.com
www.intceram.com

SINCE *AB* 1911
**ALEXANDER
BARBERS**



**REMEMBER
GENTLEMEN...
A GOOD
HAIRCUT
WILL CURE
JUST ABOUT
ANYTHING**

**FIND US AT THE ENTRANCE
OF THE HAMMERSMITH
AND CITY LINE STATION**

ALEXANDERBARBERS.COM

BE GOOD AT BEING YOURSELF

**ASK
ABOUT OUR
TWO WEEK
TRIAL**

**Unlock your child's
potential with Stagecoach
Performing Arts**

Singing, Dancing and Acting
Classes for 4-18 year old where
students learn to embrace life
with creativity and courage



Find out more today:



stagecoach.co.uk/kensington
stagecoach.co.uk/chiswick
stagecoach.co.uk/acton



kensington@stagecoach.co.uk
chiswick@stagecoach.co.uk
acton@stagecoach.co.uk



Kensington - 020 8398 8106
Chiswick - 020 8398 4709
Acton - 0208 398 4709



Creative Courage For Life®

Stage Theatre Arts Schools are operated under franchise
and are independently owned by their Principals.
Stagecoach is a registered trademark
of Stagecoach Theatre Arts Ltd.



of Invictus' wood, parquet and stone-look ranges is really outstanding.

'They are waterproof, so are suitable for kitchens and bathrooms, they have an ultra-strong top layer (Scratchmaster) that makes them extremely hard-wearing in domestic and commercial settings, they are warm and silent underfoot and, best of all, they come in a fantastic array of striking designs.'

The Carpetstore already offers a huge choice of classic and contemporary carpets for all budgets as well as made-to-measure bespoke rugs and stair runners. Last year, Clay and Joe also began stocking Sedna eco-friendly carpets.

'The yarn is spun from abandoned fishing nets,' explains Clay. 'According to the manufacturer, nets comprise one-tenth of marine litter and trap tens of thousands of creatures every year. The carpets are soft and durable and come in two qualities: a twist pile for stairs and living rooms and a Saxony, which is a luxurious deep pile for bedrooms.'

All carpets, rugs and runners sold by The Carpetstore are moth-free – a chemical is put on the yarn while it is being spun, hence it is built in – and Clay and Joe use their own experienced fitters, who also lay hardboard, ply and latex sub-floors and trim doors.

If you are investing in new carpet or flooring, whether for the home, office or a communal property, you'll receive excellent personal service and practical advice.

LUXURY VINYL STYLE

The Carpetstore is the only West London stockist of the Invictus range of wood, parquet and stone-effect vinyl flooring

As in most industries, fashions come and go in carpets and flooring. Few people are more aware of the latest trends – and better able to respond to changing demand – than brothers Clay and Joe Miller, who have been running The Carpetstore for 25 years.

When they add a new brand to their portfolio, as they have recently done with Invictus luxury vinyl flooring, it's a decision based on market knowledge. 'We've noticed that customers are increasingly favouring vinyl tiles over wood and concrete flooring,' explains Clay. 'They are going to be the next big thing – and the quality



The Carpetstore
156 Goldhawk Road, W12 8HJ
020 8749 9340
carpetstoresb@aol.com
www.thecarpetstore.info

I ♥ hg WT6



Martin Clements MNAEA
Hammersmith Sales 020 8819 0510
martin@hortonandgarton.co.uk



Ashley Clements MARLA MNAEA
Hammersmith Lettings 020 8819 0511
ashley@hortonandgarton.co.uk

**horton
andgarton**

For informed, honest advice
and an intelligent approach to your home,
our dedicated team is at your service.

hortonandgarton.co.uk